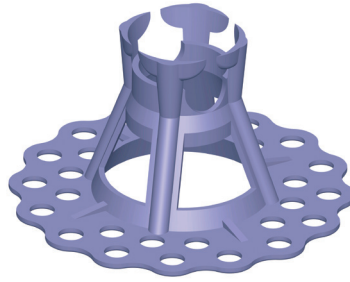


# Rebar Support



## Styrofix - Extra

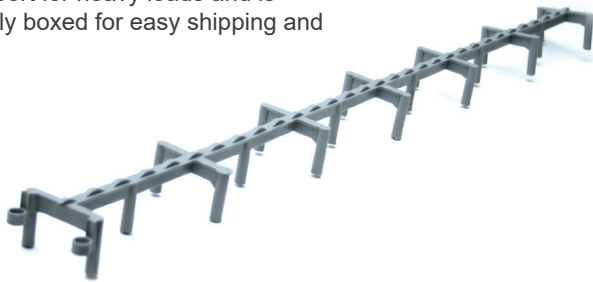
Special spacer with sand plate used on soft surfaces and insulation material. Extremely stable design with double coverage.



ITEM CODE	CONCRETE COVER	BAR SIZE	QTY/BAGS.
SF15/20	5/8" - 3/4"	M-#5	500
SF25/30	1" - 1 1/4"	M-#5	500
SF50/60	2" - 2 1/2"	M-#5	100
SF70/80	2 3/4" - 3 1/4"	M-#5	100

## Beam Bolster Plastic

Spacer with unique joints, connects to achieve the length you desire. This spacer provides sturdy support for heavy loads and is conveniently boxed for easy shipping and storage.



ITEM CODE	CONCRETE COVER	LENGTH	FT./BOX	QTY/CTN.
BBP 3/4"	3/4"	30"	300	120
BBP 1"	1"	30"	250	100
BBP 1.5"	1-1/2"	30"	250	100
BBP 2"	2"	30"	200	80
BBP 2-1/4"	2-1/4"	30"	200	80
BBP 2-3/4"	2-3/4"	30"	200	80
BBP 3"	3"	30"	150	60

## U-Fix — Slab Bolster

Plastic rod spacer for cost-effective laying of reinforcement. Reduces labor costs by up to 90%. Also available without cut outs for laying on soft bases and insulating material.



ITEM CODE	CONCRETE COVER	LF/BDLE	LF/PALLET
U-Fix 15	1/2"	325	18200
U-Fix 20	3/4"	325	18200
U-Fix 25	1"	325	13000
U-Fix 30	1-1/4"	325	13000
U-Fix 40	1-1/2"	195	7020
U-Fix 50	2"	195	3900