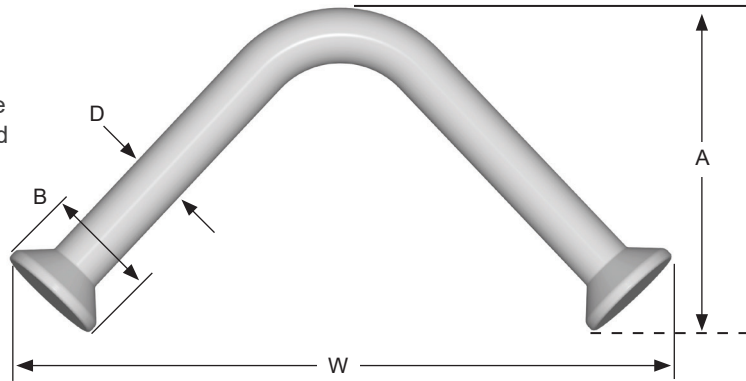


# A-Anchor System



## 14 and 18 MM A-Anchors

CONAC A-Anchors are available in standard finish galvanized and self color.



ITEM CODE	SLAB MIN. THICKNESS	SWL TENSION	SWL AT 90° SHEAR	END DISTANCE
4CA12	4"	2600	4000	9"
4CA14	4"	3500	5400	9"
5CA14	5"	5500	8500	10"
5CA18	5"	6000	9300	10"
6CA14	6"	6500	10100	12-1/2"
6CA18	6"	7500	11600	12-1/2"
8CA18	8"	13000	20000*	15-1/2"

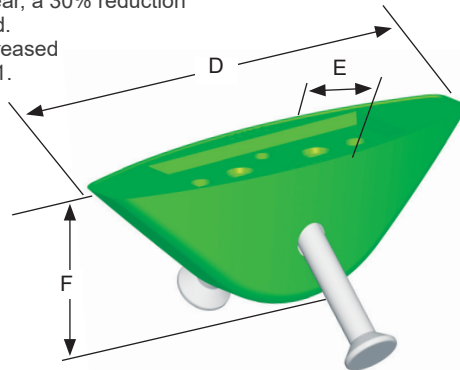
ITEM CODE	DEPTH (A)	ANCHOR WIDTH (W)	BODY DIA. (D)	BASE DIA. (B)	PANEL DEPTH
4CA12	3-1/4"	5-1/8"	1/2"	1-3/16"	4"
4CA14	3-1/8"	6-5/16"	9/16"	1-3/16"	4"
5CA14	3-3/4"	8-1/4"	9/16"	1-3/16"	5"
5CA18	3-3/4"	8-11/16"	11/16"	2"	5"
6CA14	4-3/4"	10-9/16"	9/16"	1-9/16"	6"
6CA18	4-3/4"	9-1/16"	11/16"	2"	6"
8CA18	6-3/4"	12-1/4"	11/16"	2"	8"

Note: Safe working loads based on approximate 4:1 safety factor with a minimum concrete strength of 4,000 psi.  
 \* When using the 8CA18 utility anchor with the A-PRF-1-18-1/2 and CRRF1118-4 recess formers in shear, a 30% reduction must be applied to published shear load.  
 For use as pulling iron load may be increased by up to 33% with a Safety Factor of 3:1.

CONAC A-Anchors are available in Stainless Steel 316 upon request.

## A-Anchor Rubber Recess Formers

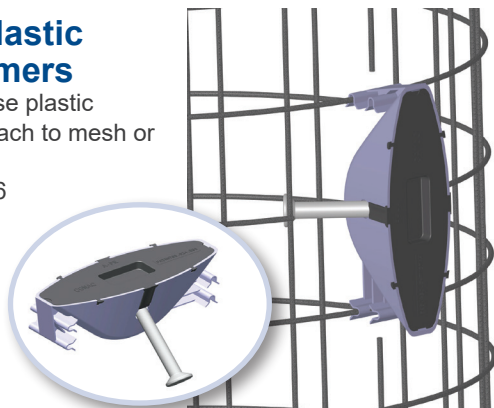
A-Anchor Rubber Recess Formers are manufactured in 90° angles. The recess former sets the top of the anchor 3/4" below the surface of the concrete.



ITEM CODE	D	E	F	COLOR
CRRF9014	9"	3"	3-1/4"	Red
CRRF9018	9"	3"	3-1/4"	Black
CRRF9014-4	9"	3"	4"	Yellow
CRRF9018-4	9"	3"	4"	Green
CRRF1118	11"	3-1/8"	3-1/2"	Black
CRRF1118-4*	11"	4"	4"	BLUE

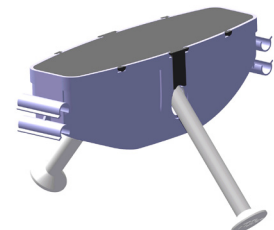
## A-Anchor Plastic Recess Formers

A-Anchor single use plastic recess formers attach to mesh or rebar cages. Patent # 8,024,896



ITEM CODE	D	E	F	QTY/BOX
A-PRF-1	9"	3"	3-1/4"	110 PCS
A-PRF-1-18	9"	3"	3-1/4"	110 PCS
A-PRF-1-18-1/2*	11"	4-1/8"	4"	60 PCS

\* When using the 8CA18 utility anchor with the A-PRF-1-18-1/2 and CRRF1118-4 recess formers in shear, a 30% reduction must be applied to published shear load.



A-PRF-1-18-1/2 Designed for Box Culvert Lifting