

Form Accessories



Formlatch

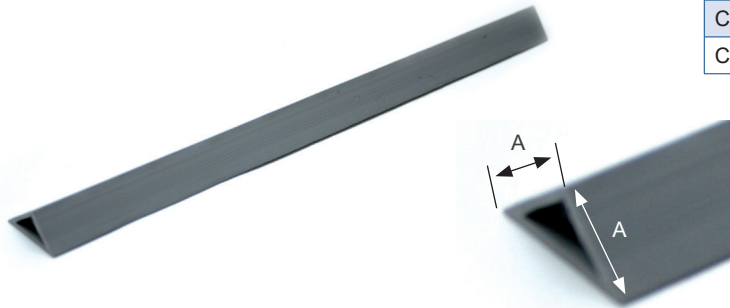
Corner clamp for a variety of forms.



PART N.	SIZE
FORMLATCH BODY	15" Arm
FORMLATCH BALL	

Chamferfix

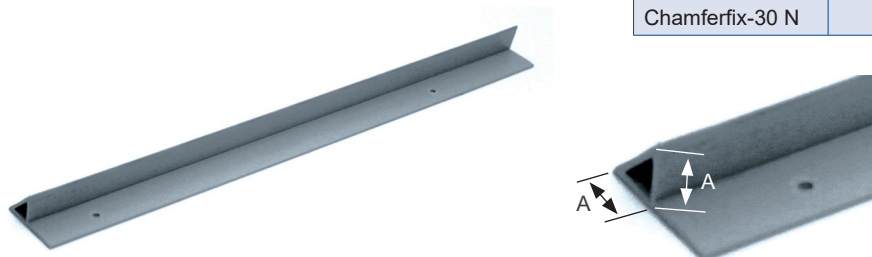
For forming chamfered edges to columns and beams, Chamferfix re-usable fillet is a thick-walled extrusion of impact-strength PVC.



REFERENCE	MEASUREMENT "A"	LENGTH	PACKING FT/BNDL
Chamferfix 6	1/4"	8.25 FT	330
Chamferfix 11	3/8"	8.25 FT	330
Chamferfix 15	5/8"	8.25 FT	330
Chamferfix 20	3/4"	8.25 FT	330
Chamferfix 25	1"	8.25 FT	165
Chamferfix 30	1 1/4"	8.25 FT	165

Chamferfix With Nailing Flange

With nailing holes in the flange, this type of Chamferfix makes for easy fitting at corners of molds, and also safe stripping, which helps to achieve maximum reuse.



ITEM CODE	MEASUREMENT "A"	LENGTH	PACKING FT/BNDL
Chamferfix-11 N	3/8"	8.25 FT	330
Chamferfix-15 N	5/8"	8.25 FT	330
Chamferfix-20 N	3/4"	8.25 FT	330
Chamferfix-25 N	1"	8.25 FT	165
Chamferfix-30 N	1 1/4"	8.25 FT	165