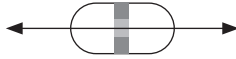


Flat Steel System

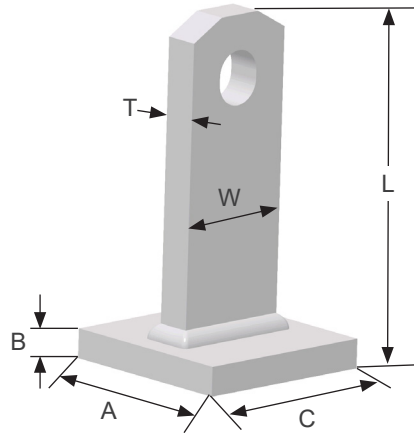


Plate Anchor (Square Base)

The CONAC FPA-S Series Anchors have been developed with a large square base, increasing the shear cone within the concrete and eliminating the requirement for additional rebar reinforcement over the base plate in achieving the listed SWL.



When used in shear, the load should be perpendicular to the face of the anchor.



The larger square base allows achieving listed SWL without additional rebar reinforcement over the base plate.

TON	SYS CODE	ITEM CODE	ANCHOR DEPTH (L)	BODY WIDTH (W)	BODY THICK. (T)	BASE THICK. (B)	BASE WIDTH (A)	BASE LENGTH (C)	MIN EDGE DIST.	SWL TENSION (LBS)	SWL SHEAR (LBS)	UML (LBS)
4	5	FPA-S043916	3-9/16"	1-1/2"	5/8"	3/8"	3"	3"	7-1/2"	5500	5500	32000
4	5	FPA-S044916	4-9/16"	1-1/2"	5/8"	3/8"	3"	3"	9"	7000	7000	32000
8	10	FPA-S08638	6-3/8"	2-1/2"	3/4"	5/8"	4"	4"	12-1/2"	15250	15250	64000
8	10	FPA-S08738	7-3/8"	2-1/2"	3/4"	5/8"	4"	4"	14"	16000	16000	64000

Safe working loads based on approximate 4:1 Safety Factor in 3,500 psi normal weight concrete.

UML= Ultimate Mechanical Load