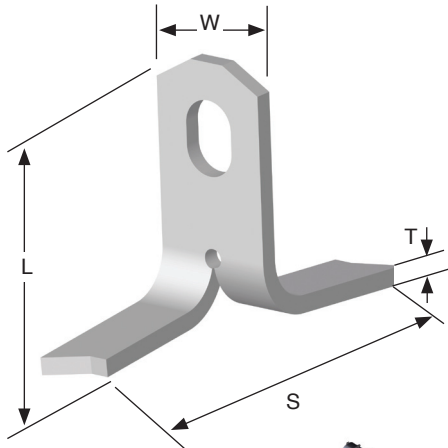


FLAT STEEL

FLAT FOOT ANCHOR

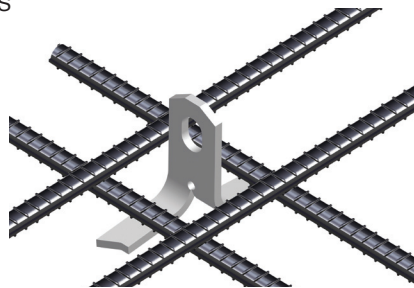
Ideal for back stripping or lifting thin precast panels.



| TON | SYS CODE | PART NUMBER | ANCHOR LENGTH (L) | BODY WIDTH (W) | BODY THICK. (T) | BASE SPREAD (S) | SWL TENSION (LBS) | UML TENSION (LBS) |
|-----|----------|--------------|-------------------|----------------|-----------------|-----------------|-------------------|-------------------|
| 2 | 2.5 | F FA 02 028A | 2-3/4" | 1-1/4" | 3/16" | 4" | 2,000 | 8,000 |
| 2 | 2.5 | F FA 02 034A | 3-3/8" | 1-1/4" | 3/16" | 4" | 2,000 | 8,000 |
| 2 | 2.5 | F FA 02 028B | 2-3/4" | 1-1/4" | 3/8" | 4" | 4,000 | 16,000 |
| 2 | 2.5 | F FA 02 034B | 3-3/8" | 1-1/4" | 3/8" | 4" | 4,000 | 16,000 |
| 4 | 5 | F FA 04 038 | 3-3/4" | 1-1/2" | 1/2" | 4" | 6,000 | 24,000 |
| 8 | 10 | F FA 08 063 | 6-1/4" | 2-1/2" | 5/8" | 6" | 12,000 | 48,000 |

Safe working loads based on 4:1 Safety Factor in 3,500 psi normal weight concrete.

UML= Ultimate Mechanical Load in tension



Reinforced Tension Loads require the use of additional rebars positioned as shown over the feet of the anchor.

For 2 ton anchors, use 2 x #4 rebars x 12" long each direction.

For 4 and 8 Ton anchors, use 2 x #4 rebars x 18" long each direction.

Maintain at least 3/4" cover underneath the feet of the anchor.