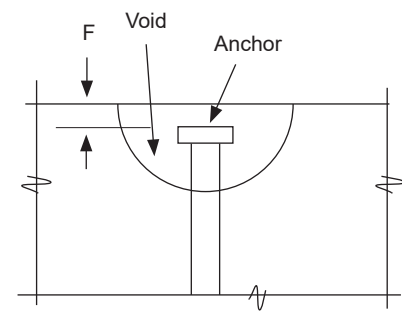
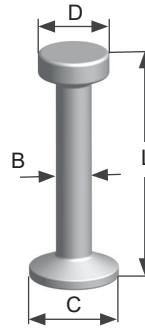


DR System

DR Anchors

Economical and effective method for backstripping or face lifting in tension. The system code is stamped on the head of each anchor to match with the correct lifting unit. Stocked in hot dip galvanized; mill finish available on request.



ITEM CODE	SYSTEM CODE	LENGTH (L)	SWL TENSION (LBS)	EDGE DISTANCE	BODY DIAMETER (B)	BASE DIAMETER (C)	HEAD DIAMETER (D)	HEAD RECESS (F)
		1-TON						
DRA01055HG	1.3	2-3/16"	2020	3-3/4"	3/8"	1"	3/4"	3/8"
DRA01065HG	1.3	2-9/16"	2070	4-1/2"	3/8"	1"	3/4"	3/8"
DRA01085HG	1.3	3-3/8"	2070	5-3/4"	3/8"	1"	3/4"	3/8"
DRA01120HG	1.3	4-11/16"	2070	7-3/4"	3/8"	1"	3/4"	3/8"
DRA01200HG	1.3	8"	2070	14-3/4"	3/8"	1"	3/4"	3/8"
		2-TON						
DRA02045HG	2.5	1-3/4"	1590	3-1/2"	9/16"	1-3/8"	1"	7/16"
DRA02070HG	2.5	2-3/4"	2850	4-3/4"	9/16"	1-3/8"	1"	7/16"
DRA02085HG	2.5	3-3/8"	3710	5-3/4"	9/16"	1-3/8"	1"	7/16"
DRA02120HG	2.5	4-11/16"	4060	7-3/4"	9/16"	1-3/8"	1"	7/16"
DRA02140HG	2.5	5-1/2"	4130	9"	9/16"	1-3/8"	1"	7/16"
DRA02170HG	2.5	6-11/16"	4130	10-3/4"	9/16"	1-3/8"	1"	7/16"
DRA02280HG	2.5	11"	4130	17"	9/16"	1-3/8"	1"	7/16"
		4-TON						
DRA04075HG	5	3"	3360	5-1/4"	3/4"	2"	1-7/16"	5/8"
DRA04095HG	5	3-3/4"	4580	6-1/2"	3/4"	2"	1-7/16"	5/8"
DRA04110HG	5	4-5/16"	5580	7-1/2"	3/4"	2"	1-7/16"	5/8"
DRA04120HG	5	4-11/16"	6280	8"	3/4"	2"	1-7/16"	5/8"
DRA04140HG	5	5-1/2"	7760	9-1/4"	3/4"	2"	1-7/16"	5/8"
DRA04160HG	5	6-5/16"	8260	10-1/4"	3/4"	2"	1-7/16"	5/8"
DRA04180HG	5	7-1/16"	8260	11-1/2"	3/4"	2"	1-7/16"	5/8"
DRA04240HG	5	9-7/16"	8260	15"	3/4"	2"	1-7/16"	5/8"
		8-TON						
DRA08120HG	10	4-11/16"	6200	7-3/4"	1-1/8"	2-5/8"	1-7/8"	5/8"
DRA08135HG	10	5-5/16"	7310	8-3/4"	1-1/8"	2-5/8"	1-7/8"	5/8"
DRA08150HG	10	5-15/16"	8460	9-3/4"	1-1/8"	2-5/8"	1-7/8"	5/8"
DRA08170HG	10	6-11/16"	10090	10-3/4"	1-1/8"	2-5/8"	1-7/8"	5/8"
DRA08220HG	10	8-7/8"	14540	13-3/4"	1-1/8"	2-5/8"	1-7/8"	5/8"
DRA08250HG	10	9-7/8"	16260	15-1/2"	1-1/8"	2-5/8"	1-7/8"	5/8"
DRA08340HG	10	13-3/8"	16260	21"	1-1/8"	2-5/8"	1-7/8"	5/8"
		16-TON						
DRA16250HG	20	9-7/8"	17270	15-1/2"	1-1/2"	3-7/8"	2-5/8"	5/8"
DRA16500HG	20	19-11/16"	31550	30"	1-1/2"	3-7/8"	2-5/8"	5/8"
		20-TON						
DRA20500HG	20	19-11/16"	40000	40"	1-1/2"	3-7/8"	2-5/8"	5/8"

Safe working loads based on approximate 4:1 safety factor in 5,000 psi normal weight concrete.