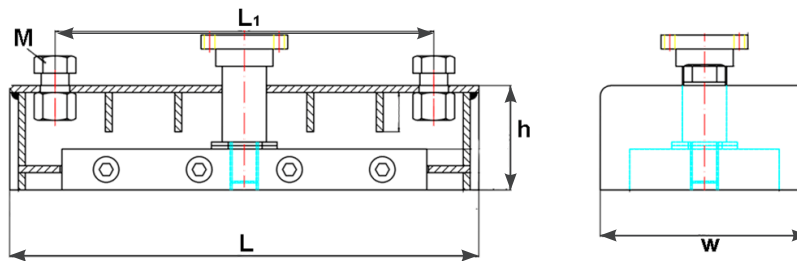


Push Button Form Magnets

The push button magnet is primarily used in side rails and blockouts but can be applied to a wide variety of forming scenarios including custom forms. This powerful internal magnet, available in a range of adhesion force capacities, can be applied to the steel form by pressing down on the centered button and is released from the steel by pulling up the same centered button, allowing for easy and convenient usage and long term reusability.



ITEM CODE	TENSION LOAD (LBS)	L	L1	H	W	M
PBM 500	1000	6-11/16"	5"	1-9/16"	2-3/8"	M16x25
PBM 1000	2000	11"	9-1/16"	1-9/16"	2-3/8"	M16x25
PBM 2100	4000	10-5/8"	8-9/16"	2-3/8"	4-3/4"	M16x25
PBM 2500	5000	12-9/16"	10-5/8"	2-3/8"	4-3/4"	M16x25

Magnetic Steel Chamfers

The reusable magnetic chamfer line use a steel construction with embedded N50 magnet strips. It is used to create a beveled edge on the corners or face of the precast product. They can be reused indefinitely as long as magnetization is maintained. The magnet keeps the steel fixed in position to ensure consistency in the final result.



ITEM CODE	MEASUREMENT "A"	LENGTH	PACKING FT/BDLE
MSC 13-S	1/2"	10 FT	200
MSC 20-S	3/4"	10 FT	200
MSC 25-S	1"	10 FT	200