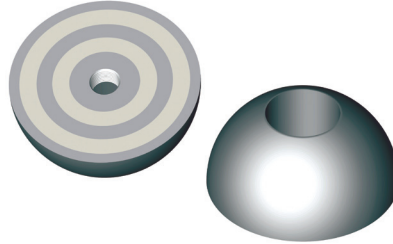


## Magnetic System for Steel Formwork

### KA Series

The KA Series magnet is machined from solid material and fitted with high performance magnets, providing a high power system for securing DR Anchors. The magnetic surface is sealed, protecting it against corrosion and damages.

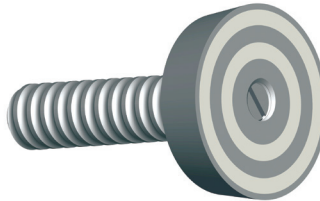
Requires use of rubber seals to stabilize anchor (see DR Anchor).



ITEM CODE	LOAD	DIMENSIONS
KA-13M	1 TON	2-3/8"
KA-25M	2 TON	3"
KA-50M	4 TON	3-7/8"
KA-75M	8 TON	4-3/4"

### Magnetic Locator

Use for fixing coil or Ferrule inserts to steel forms.

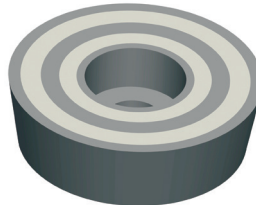


ITEM CODE	DIAMETER	THREAD TYPE
MLC05	1/2"	Coil
MLC75	3/4"	Coil
MLC10	1"	Coil
MLN05	1/2"	NC
MLN75	3/4"	NC
MLN10	1"	NC

Custom cut rod length.

### R/Z Series

The R/Z – Series magnetic system was specifically designed to be fitted into reusable box-outs. Compared to other systems of its kind, the R/Z series is specially sealed to protect its magnetic side. This system is characterized by particularly high magnetic force.

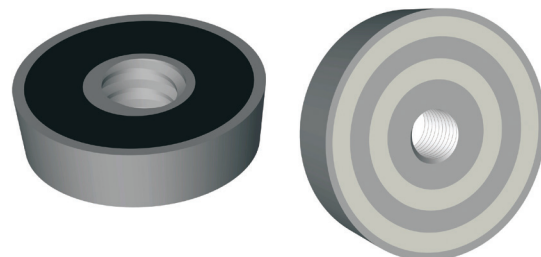


ITEM CODE	TENSION LOAD IN (LBS)	WIDTH	HEIGHT
R/Z-105	231	2"	9/16"

### R/G Series

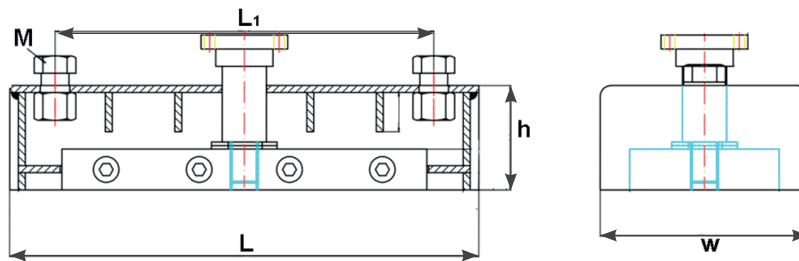
The R/G Magnetic system is designed to help with installing attachments to steel forms without drilling or bolting. Due to its high adhesion power and slender design, this magnet holds attachments on flat and vertical surfaces with confidence while taking up minimal space. These magnets come standard with metric threads from 10mm through 36mm. Standard NC thread combinations are also available.

ITEM CODE	TENSION LOAD IN (LBS)	DIAMETER	HEIGHT	THREAD
R/G-105	231	2-1/16"	9/16"	10mm-36mm
R/G-190	418	2-1/16"	9/16"	10mm-36mm



## Push Button Form Magnets

The push button magnet is primarily used in side rails and blockouts but can be applied to a wide variety of forming scenarios including custom forms. This powerful internal magnet, available in a range of adhesion force capacities, can be applied to the steel form by pressing down on the centered button and is released from the steel by pulling up the same centered button, allowing for easy and convenient usage and long term reusability.



ITEM CODE	TENSION LOAD (LBS)	L	L1	H	W	M
PBM 500	1000	6-11/16"	5"	1-9/16"	2-3/8"	M16x25
PBM 1000	2000	11"	9-1/16"	1-9/16"	2-3/8"	M16x25
PBM 2100	4000	10-5/8"	8-9/16"	2-3/8"	4-3/4"	M16x25
PBM 2500	5000	12-9/16"	10-5/8"	2-3/8"	4-3/4"	M16x25

## Magnetic Steel Chamfers

The reusable magnetic chamfer line uses a steel construction with embedded N50 magnet strips. It is used to create a beveled edge on the corners or face of the precast product. They can be reused indefinitely as long as magnetization is maintained. The magnet keeps the steel fixed in position to ensure consistency in the final result.



ITEM CODE	MEASUREMENT "A"	LENGTH	PACKING FT/BDLE
MST-S 3/4"	3/4"	10 FT	
MST-S 1"	1"	10 FT	